

YUBA-SUTTER FARM BUREAU

# croptalk

VOLUME 17 NO 12

PRODUCER FOCUS  
FARMERS' RICE  
COOPERATIVE

EMERGENCY CONSERVATION  
PROGRAM APPLICATIONS  
DEADLINE EXTENDED

25 MILLION BOXES  
OF GRAPES LOST DUE  
TO HURRICANE HILARY



# YOUR 2023-2024 YSFB BOARD OF DIRECTORS

## OFFICERS



**PRESIDENT**  
Mark Chesini  
Sutter County



**FIRST VICE PRESIDENT**  
Brian Greathouse  
Sutter County



**SECOND VICE PRESIDENT**  
Michael Denny  
Sutter County

## DIRECTORS, SUTTER COUNTY



Balbir Bains



Paul Basi



Satvinder Dallar



Cecil Davis



Rajeev Davit



Sy Hoing



Christine Ivory



Joe Lemenager



James Marler



Amanda Pedrett



Harry Sidhu



Shelby Stricklin

## DIRECTORS, YUBA COUNTY



Sarb Atwal



Frank Hall



Kulwant Johl



Andrew Jansen



Amar Sohal

## CFBF REPRESENTATION

CFBF District 15 Board Director: Clark Becker

CFBF Northern Region Field Representative: Ned Coe

## STAFF



Laurie Johnson  
Executive Director



Lindsay Hyde  
BYS Administrator  
& Outreach



Stephanie Younger  
Future Executive  
Director



Ciera Mannan  
Program Coordinator

## CALIFORNIA FARM BUREAU STATEWIDE ISSUES ADVISORY COMMITTEE MEMBERS

Paul Basi  
Andy Jansen  
Sat Dallar

Ag Labor  
Forestry & Public Lands  
Marketing, Organics & Produce Food Safety



## YUBA-SUTTER FARM BUREAU CROP TALK

is published monthly by the Yuba-Sutter Farm Bureau, a non-profit trade organization whose mission is to represent Yuba-Sutter agriculture through public relations, education

and public policy advocacy in order to promote the economic viability of agriculture balanced with appropriate management of natural resources. This magazine and the activities sponsored by the Yuba-Sutter Farm Bureau are paid for by the annual dues of its membership.

Articles published in Crop Talk may be reprinted without permission provided credit is given to the Yuba-Sutter Farm Bureau and a copy of the issue in which the reprint appears is forwarded to our office listed below.

Article suggestions are encouraged, and we also encourage our members to submit their own articles for review. These should be mailed to our office. Use of articles is at the sole discretion of the Crop Talk Editor.



# Sutter-Yuba 4-H Youth Development Program

## National 4-H Week — October 1-7, 2023

By UC Cooperative Extension – Sutter/Yuba Counties | 4-H Office/Bi County Farm Advisors

National 4-H Week celebrates 4-H, America's largest youth development organization. 4-H empowers nearly six million young people with the skills to lead for a lifetime.

- **4-H is a community for all kids.** In 4-H, we believe in the power of young people. We see that every child has valuable strengths and real influence to improve the world around us.
- **4-H is delivered by Cooperative Extension,** a community of more than 100 public universities across the nation that provides experiences where young people learn by doing. For more than 100 years, 4-H has welcomed young people of all beliefs and backgrounds, giving kids a voice to express who they are and how they make their lives and communities better.

**National 4-H Week** showcases the incredible experiences that 4-H offers young people and highlight the remarkable 4-H youth in Sutter and Yuba County who work each day to make a positive impact on those around them.

For National 4-H Week our 4-H clubs in Sutter and Yuba Counties will set up displays in local business and schools to promote our program and invite new member to join 4-H. We have 13 clubs in Sutter and Yuba Counties with many different projects ranging from leadership, civic engagement, sheep, poultry, arts & crafts, sewing, and rocketry. The 4-H experience creates lasting memories and builds citizenship, leadership, and life skills.

To see all our local clubs, go to our website: [https://cesutter.ucanr.edu/Youth\\_Development/4-H\\_CLUBS/](https://cesutter.ucanr.edu/Youth_Development/4-H_CLUBS/).

### Adult Volunteers Needed!

Have cool skills you want to share?  
Looking for ways to serve the local  
community?

4-H welcomes adults who want to  
share their skills as Project Leaders.  
Volunteer opportunities vary based  
on *your* interest!

- Contact us at: 530-822-7515,  
or email Rene at  
[rjmccrory@ucanr.edu](mailto:rjmccrory@ucanr.edu)
- Check out our 4-H website  
[https://cesutter.ucanr.edu/Youth\\_Development/](https://cesutter.ucanr.edu/Youth_Development/)



### Contact the Sutter-Yuba 4-H Program Staff:

4-H Youth Development Advisor: Matt Rodriguez | [mrro@ucanr.edu](mailto:mrro@ucanr.edu)

4-H Community Education Specialist: Rayna Barden | [rbarden@ucanr.edu](mailto:rbarden@ucanr.edu)

4-H Secretary: Rene McCrory | [rjmccrory@ucanr.edu](mailto:rjmccrory@ucanr.edu)

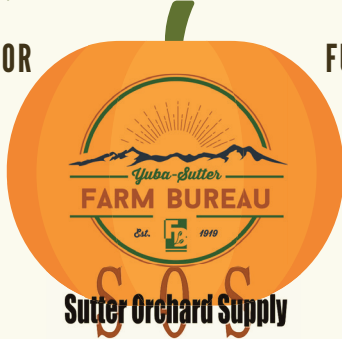
YUBA-SUTTER FARM BUREAU &  
SUTTER ORCHARD SUPPLY'S

# Pumpkin Festival

JOIN US FOR

ARTS &  
CRAFTS

PHOTO  
BOOTH



FUN GAMES

FACE  
PAINTING

AND  
MORE!

Enter our Heaviest Pumpkin or Best Carved  
Pumpkin Contests!

**OCTOBER 21, 2023**

SUTTER ORCHARD SUPPLY  
573 BRIDGE ST, YUBA CITY  
9 AM - NOON

# COUNTRY VETERINARY CLINIC

*Beautiful Country Setting for Quality, Personable Medicine*

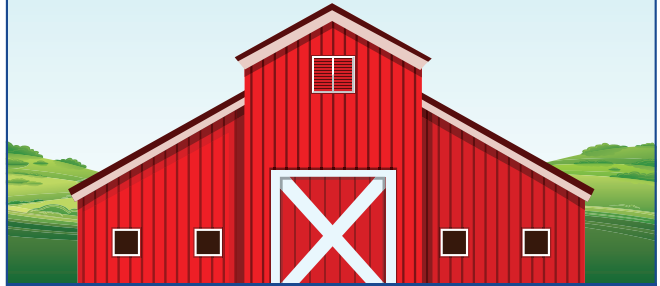
4839 E. Butte Road  
Live Oak, CA 95953

(530) 674-1660

Mon-Fri: 8:00am - 5:30pm

Sat: 8:00am - 12:00pm

Sun: 4:00pm - 6:00pm  
(for lodging pick-up only)



[www.countryvet.net](http://www.countryvet.net)

**GIUSTI CUSTOM RICE  
& SPRAYING  
(530)237-6951**

ONE PASS AQUA/ROLL RIG  
AQUA BAR/NO ROLL  
SPRAYING-STEEL WHEEL  
STOMPING  
HARVESTING



**NOW OFFERING ORCHARD SPRAYING**

# AGRICULTURE FINANCING

*It's a perfect time  
to grow.*

**LONG-TERM FINANCING  
VARIABLE & FIXED RATE OPTIONS**

- Ag Production Lines
- Ag Equipment New & Used
- Orchard Development
- Land Refinance or Acquisition
- Farmer Mac Lender

**RIVER VALLEY  
COMMUNITY BANK**  
*Local banking, done right.*



[myrvcb.com](http://myrvcb.com) | 530.755.0418



COMMITTED TO SAFETY, SECURITY & CUSTOMER SERVICE



# California's Table Grape Growers Estimate 25 Million Boxes Lost to Hurricane Hilary

Courtesy of California Ag News Today and California Table Grape Commission



**H**urricane Hilary delivered wind and rain to many of California's table grape vineyards at peak harvest time for most of the 90 varieties grown in the state. The immediate aftermath of the hurricane brought additional rain and humidity to many growing areas, compounding problems and loss. "The impact of the hurricane and its aftermath is devastating and heartbreaking," said Kathleen Nave, president of the California Table Grape Commission.

"To say that the grower and farmworker community is in shock is an understatement."

With approximately 30 percent of the crop harvested when the hurricane hit, it is projected that 35 percent of the remaining crop—25 million boxes—has been lost. "The revised estimate for the California crop is 71.9 million 19-pound boxes," said Nave. "The last time the crop was under 75 million boxes was 1994."

Noting that it is typical for California to ship over 65 percent of its crop after September 1, Nave said that based on the

revised estimate there are still over 45 million boxes of grapes the industry plans to ship. "Reaching consumers at retail stores is a major focus of the work done by the commission," Nave said. "Partnering with retailers to get grapes on store shelves and to promote them to consumers is work that will continue throughout the season."

Nave said that retailers understand the damage the storm caused and the many ways that labor costs will increase as a result. "Retailers understand that even with skilled workers it will take more time to harvest much of the remaining crop and that accordingly, to keep grapes on the retail shelves throughout the fall the price paid to growers will need to be enough to make it worthwhile to harvest."

Nave said the industry plans to continue assessing the situation in the weeks ahead, providing updates as needed, and that the commission will continue its retail promotion activities and consumer advertising campaigns throughout the season. ☺

Tree Sales, Consulting, Custom Pruning & Grafting

## Sutter Buttes Nursery

Ernie Rodriquez, Owner  
Sam Nevis, Owner  
Dominic Nevis, Owner

PO Box 3775 Yuba City, CA 95992

# 530-674-2060

**OAKVIEW**  
INSURANCE SERVICES, INC.

**FARM & AGRIBUSINESS  
INSURANCE**  
(530) 674-5054

Nationwide Farm Certified  
& AFIS Certified

**50**  
CA Ag Leadership  
Foundation Class 50

*Megan Stephens-Grima*  
"Farm Gal Turned Insurance Gal"

megan@yourfavoriteagent.net LIC# 0L91635



# FARMERS' RICE COOPERATIVE



By Ciera Mannan, Yuba-Sutter Farm Bureau Program Coordinator

**F**armers' Rice Cooperative (FRC), a grower-owned rice marketing cooperative, was founded in 1944 and represents over 500 member-owners. FRC is responsible for supplying rice products to over 65 countries across the globe. FRC's dedication to providing the highest quality products as efficiently as possible is what gives them the upper hand over their competitors. Being a cooperative, FRC's mission is to create and maintain strong connections with their customers, growers, employees, vendors, and other valuable stakeholders.

Farmers' Rice Cooperative is extremely vertically and horizontally integrated which allows FRC to directly control every step in the rice producing process, starting from when the seed is planted all the way up until the rice is sold in stores. Once the rice is harvested, it then gets transported to a drying facility for the rice to be measured, monitored, and sampled as a way of checking moisture levels. After the



Credit Given to: Farmers' Rice Cooperative- FRC offers multiple flexible packaging options, and in multiple packaging sizes.

levels are checked, the rice is dried down to the correct moisture level as the next step in the processing procedure. FRC has four drying locations located in Colusa, Sutter, West Sacramento, and Woodland.

The next step in this process is to transport the rice to a mill for the kernel to be hulled into the grain that we all eat. Farmers' Rice Cooperative owns and operates three mills. The newest mill was purchased by FRC in 2020 and is located directly off of I-5 in Woodland, California. The other two mills are located on 26 acres neighboring the Port of Sacramento, in West Sacramento, California. Each of these state-of-the-art mills features the latest and greatest milling technology and process control which gives FRC the capability to operate with minimum labor at maximum efficiency. Having the ability to work with cutting-edge technology, and highly experienced employees allows FRC to produce the highest quality of products that they offer.

As a result of Farmers' Rice Cooperative's state-of-the-art technology, they are able to package multiple sizes, as well as the most popular types of bags in the rice industry. Multiwall paper, polypropylene, BOPP, clear laminates, metalized laminates, and cotton bags are just a few of the materials that FRC is able to package in. FRC takes the lead in adding value to the rice it produces by persistently searching for groundbreaking methods in packaging and consistently

upgrading to newer technology. The use of robotics to consistently handle finished goods, and the infrared color sorters which inspect every grain of rice are products of the capital investment program that FRC has developed.

Farmers' Rice Cooperative's diverse packaging options for retail and wholesale distribution and their in-house document and freight support allows them to provide the highest level of customer service for domestic and international clients. Half of their volume is sold internationally, while the other half is sold domestically. Farmers' Rice supplies rice to numerous countries with Japan, Korea, and the Middle East leading the international export volume. FRC's domestic orders are milled fresh, packed, and shipped to their customers within 5-9 days.

Since the California rice industry annually contributes more than \$1.3 billion dollars to the state's economy, it is extremely important to have a company that prioritizes quality and efficiency when it comes to the production of rice. Farmers' Rice Cooperative processes and markets about 25% of all the rice that is grown in California. FRC is a great example of a company dedicated to providing their customers, growers, employees, and other stakeholders with exceptional service while continually producing the highest quality products as efficiently as possible.



Brynn Lauppe (Intern), Madison Escherman (Intern), and Ciera Mannan (Program Coordinator) went on a tour of FRC's facilities to get an inside scoop on how they operate.





# New name. Same commitment to your success.

Farm Credit West is now AgWest Farm Credit.

Providing agricultural financial services, backed by a century of experience—to help you grow your legacy.

Contact your local branch or visit  
[AgWestFC.com](http://AgWestFC.com) to learn more.



This institution is an equal opportunity provider and employer.



# Yuba-Sutter Young Farmers and Ranchers Annual Drive Thru BBQ

By Martina Damboriena



The Yuba Sutter Young Farmers and Ranchers have had a busy month, with several members actively involved in harvest, orchestrating a BBQ event, and even fitting in time to tour our local Sutter County Museum. We're looking forward to our upcoming Drive Thru BBQ on October 26th. If you're interested in purchasing tickets or have any questions about the BBQ, please feel free to contact us at (530) 790-5592. If you or someone you know is passionate about the agriculture industry or keen to learn more about it, we invite you to reach out to our organization. We warmly welcome new members!

**YUBA SUTTER YOUNG FARMERS AND RANCHERS**

## ANNUAL DRIVE THRU BBQ

**Feed Your Farmers Deal(Feeds 12):\$150**  
Includes: 3 Tri-Tips, Beans, Rolls, Salad and Cookies

**Family Meal(Feeds 4):\$60**  
Includes: 1 Tri-Tip, Beans, Rolls, Salad and Cookies

**Sponsorship (Feeds 8):\$300**  
Includes: 2 Tri-tip meals, YF&R Swag, Social Media Mention and Crop Talk Mention

---

**DATE: OCTOBER 26TH 2023**  
**TIME: 4PM-6PM**  
**LOCATION: HOLT AG SOLUTIONS**  
**2950 COLUSA HWY YUBA CITY**

All of the money raised will be used to support Agriculture Education in our community, including scholarships, agriculture tours and local agriculture events.



## Local expertise with a global perspective

At Rabo AgriFinance, we offer a full suite of customized financial services and insurance products for leading agricultural producers and agribusinesses. When you choose us, you're choosing a strong, stable global financial partner who can help you navigate economic challenges and seize opportunities.

There's no limit to your business's growing ambition.



Growing a better world together | [RaboAg.com](https://RaboAg.com)



# Goodbye to Our Interns

By Brynn Lauppe and Madison Escheman



I have loved my summer here at the Yuba-Sutter Farm Bureau! During this internship, I have learned the importance of supporting our farmers and ranchers that are our neighbors and families and what it takes to truly be a grassroots organization. Being able to learn more about the counties I grew up in has made me appreciate home that much more. Going into my third year at Cal Poly, I am excited to see how I can use this experience in my future career and to show people the influence Yuba and Sutter counties have on the agricultural industry in California and all over the world.

Thank you to Laurie Johnson, Lindsay Hyde, and everyone at the Yuba-Sutter Farm Bureau office for being such awesome teachers, mentors, and friends and making this summer one for the books!

*Brynn Lauppe*

Hello everyone, it's me, Maddie Escheman! I have been an intern at the "Yuba Sutter Farm Bureau" for almost two years. You might have come in contact with me over the phone, read my articles in Crop Talk, asked me to do your annual BYSWQC reporting, or have seen me at one of our many events. Throughout the last two years, I have learned so many valuable lessons and have had so many great opportunities. I truly believe that without my YSFB family I wouldn't have made so many amazing connections with agriculture within our community. I wanted to give a special thanks to my bosses Laurie Johnson and Lindsay Hyde for always being there to support me and push me to my best potential and prepare me for the next level when it comes to my career and life goals. I am so blessed to

have so many strong women in agriculture within my life and you girls will always have a special place within my heart. I also wanted to thank our Board of Directors who have always shared positivity and guidance throughout my time here. And finally, I wanted to give a big thank you to our members. By interacting with all of you, I have learned so much about the agricultural industry and the hard work it takes to be a part of the next generation of agriculturalists. I have recently taken a position at Evans Ag Consulting where I hope to take the valuable skills I've learned here and put them to use. This isn't goodbye! I will still be around to continue serving on YSFB committees and volunteering my time. Thank you so much YSFB family!

*Maddie Escheman (Senior Intern)*

## ADVERTISE HERE

We can help you reach over 700 members in our agriculture community

- Flexible options
- Discounts
- Design Help

530-673-6550

[www.ysfarmbureau.com](http://www.ysfarmbureau.com)



## HELP US HELP YOU! EVERY FARM BUREAU MEMBER COUNTS!

### PLEASE RENEW ON TIME

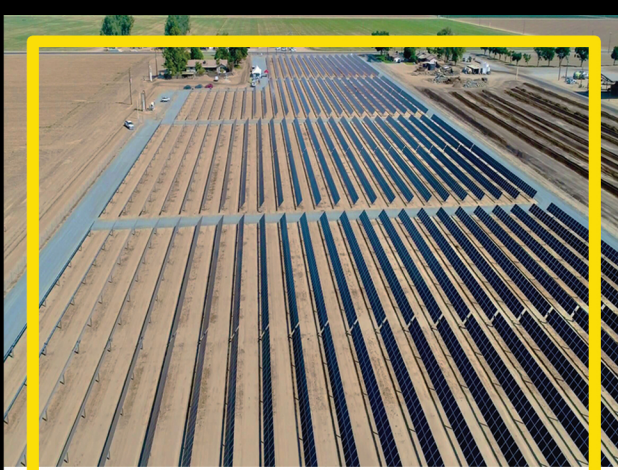
When you renew on time: We are able to receive additional premiums from CFBF for reaching our membership goal.

The additional money we receive goes toward our events, programs and donations that help the Yuba-Sutter agriculture community.



**CALL US IF YOU HAVE QUESTIONS 530.673.6550**





## Why Wait?

- Top operators are already adding solar. Why aren't you?
- Solar can save business owners 60-75% on their power bill.
- In most cases solutions currently have a 3-5 year payback.
- Solar provides between a 20-35% return on investment.
- Solar saves between \$40,000-\$70,000 annually per acre.

Call Adam Okonski at 916-495-1429.

**RENEWABLE SOLAR**

Exceptional People. Exceptional Performance.™

559-410-8640 • [www.RSI.SOLAR](http://www.RSI.SOLAR)

# BLUE JACKET BONANZA

BY THE YUBA-SUTTER FARM BUREAU

ATTENTION FRESHMEN,  
SOPHOMORE & JUNIOR  
FFA MEMBERS!!!

## FFA JACKET SCHOLARSHIP OPPORTUNITY

Apply to get your FFA Jacket sponsored by the  
Yuba-Sutter Farm Bureau!

**Applications due Thursday October 26, 2023**

See your FFA advisor or check out our website  
for Guidelines & Application Requirements:  
[www.ysfarmbureau.com/blue-jacket-bonanza](http://www.ysfarmbureau.com/blue-jacket-bonanza)



**CORE FINANCIAL  
GROUP**

PLANNING · INVESTMENTS · INSURANCE

Supporting farming  
professionals in securing the  
business they have grown  
from the ground up.

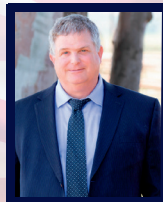
### LET US HELP YOU WITH:

- \* Retirement & Estate Planning
- \* Create & Preserve Wealth
- \* Investment Management
- \* Help in Mitigating Taxes
- \* Financial Plan Tailored to Your Needs



**Matthew DiGiacomo, CFP®**

**Call Us Today!**  
**530.751.9525**



**Michael Critchfield, CFP®**

The financial professionals of Core Financial Group are Registered Representatives and Investment Adviser Representatives with/and offer securities and advisory services through Commonwealth Financial Network, Member FINRA/SIPC, a Registered Investment Adviser. Fixed insurance products and services are separate from and not offered through Commonwealth. CA Insurance License # Michael Critchfield OE80445 | Matthew DiGiacomo OD83913.

1215 Plumas St. Suite 1502 Yuba City CA 95991



## YUBA-SUTTER YOUNG FARMERS & RANCHERS

Preparing the next generation.

The Young Farmers & Ranchers Committee is a program for agriculturalists between the ages of 18 and 35 involved in production, banking, business, and many other areas of the industry. YF&R provides opportunities to develop leadership skills through involvement in Farm Bureau at the county, state, and national levels. YF&R members are a vital part of the organization.

### How Do I Become Involved?

Contact the Yuba- Sutter Young Farmers Ranchers Chair, Lillian Smith, at [yubasutteryfr@gmail.com](mailto:yubasutteryfr@gmail.com).



# USDA Extends Deadline for Emergency Conservation Program Applications from California Producers in 52 Countries

Funding Available to Help Restore Lands to Pre-Disaster Condition, Replace or Repair Fencing

*Courtesy of the California Farm Service Agency Newsletter*



*Photo Credit Given to: USDA Natural Resources Conservation Service*

The U.S. Department of Agriculture (USDA) has extended the deadline for accepting Emergency Conservation Program (ECP) applications from California agricultural producers who need assistance to address damages from severe storms. The application deadline has been extended an additional six months to October 13, 2023.

“We understand the extent of the damage caused by these severe storms and the catastrophic and widespread impacts of these disasters on California’s agricultural communities,” said Blong Xiong, State Executive Director for the Farm Service Agency (FSA) in California. “This deadline extension will give producers more time to apply for emergency assistance and rebuild with resiliency.”

ECP provides financial assistance to producers to help them restore their farmland to predisaster conditions. Approved ECP applicants may receive up to 75% of the cost of an approved restoration activity. Limited resources, socially disadvantaged, and beginning farmers and ranchers may receive up to 90% cost-share. The payment limitation for ECP is \$500,000 per disaster event.

The approved counties for ECP sign-up are Alameda, Alpine, Amador, Butte, Calaveras, Colusa, Contra Costa,

Del Norte, El Dorado, Fresno, Glenn, Humboldt, Imperial Inyo, Kern, Kings, Los Angeles, Madera, Marin, Mariposa, Mendocino, Merced, Modoc, Monterey, Napa, Nevada, Placer, Plumas, Sacramento, San Benito, San Diego, San Francisco, San Joaquin, San Luis Obispo, San Mateo, Santa Barbara, Santa Clara, Santa Cruz, Shasta, Sierra, Siskiyou, Solano, Sonoma, Stanislaus, Sutter, Tehama, Trinity, Tulare, Tuolumne, Ventura, Yolo and Yuba.

The approved ECP practices under this authorization for recovery include:

- Removing debris from farmland;
- Grading, shaping, releveling, or similar measures;
- Replacing or repairing permanent fences; and
- Restoring conservation structures and other installations

Producers with damage from such events must apply for assistance prior to beginning reconstructive work. They must also work with FSA to complete the National Environmental Policy Act (NEPA) and environmental compliance review process. before they begin reconstructive work. If a producer submits an ECP application after reconstructive work has been completed, their eligibility for program benefits may be adversely impacted.

FSA county committees will evaluate applications based on an

applicant’s estimate or measurement of the damaged land, taking into consideration the type and extent of the damage. On-site visits will be required for every ECP application. Applying for ECP assistance does not guarantee that cost-share funding will be provided.

The use of ECP funds is limited to activities to return the land to the relative pre-disaster condition. Conservation concerns that were present on the land prior to the disaster are not eligible for ECP assistance.

For more information on ECP, please contact your local FSA office or visit [farmers.gov/recover](https://farmers.gov/recover). To find your local FSA office visit [farmers.gov/service-center-locator](https://farmers.gov/service-center-locator). Additional USDA disaster assistance can be found on [farmers.gov](https://farmers.gov), including the Disaster Assistance Discovery Tool, Disaster Assistance-at-a-Glance fact sheet, and Loan Assistance Tool can help producers and landowners determine program or loan options. For assistance with a crop insurance claim, producers and landowners should contact their crop insurance agent. For FSA and NRCS programs, they should contact their local USDA Service Center. 🌱

# The Law Offices of Robin Clark Bevier, PC

Your Business and Estate Planning Attorney Since 1985

## ESTATE TAX AND FAMILY SUCCESSION PLANNING FOR FARMERS & RANCHERS

“My business and legal education complement my understanding and use of estate planning techniques to assist my clients to integrate family, tax, business, and succession requirements, into a comprehensive estate and business plan.”

- Estate and Succession Planning for Family Farms
- Estate Tax Planning
- Family Wealth Transfer Planning
- Use of Special Use Valuation for Family Farms & Ranches

(916) 858-0904  
rbevier@robinbevier.com  
www.BevierLaw.com

Roseville Law Office: 970 Reserve Drive, Ste. 105, Roseville, CA 95678  
Gold River Law Office: 2479 Sunrise Blvd. Gold River, CA 95670



Estate & Business Planning Expert  
35 Years of Experience

## El Niño is coming: What does that mean for your property?

The chance that our young El Niño will continue through the winter is greater than 90%. Our reservoirs are full from last winter and with summer coming to an end the next storm is not far away.

Since flood insurance needs 30 days to take effect, now is the time for you to put the proper flood coverage in place to help protect your property.



**For a NO cost flood quote  
contact Missy Kirkham  
(530) 741-0441**



# Increased Contracted Production Forecasted for Processing Tomato Industry

By Brian German, Ag News Director/ AgNet West



Photo Credit: Brian German, AgNet West

California's processing tomato industry is gearing up for a strong season, with contracted production forecasted to reach 12.9 million tons, averaging 50.8 tons per acre. This projection represents a substantial 23 percent increase over last year's contracted production of 10.5 million tons. The figure released by the U.S. Department of Agriculture's National Agricultural Statistics Service also represents a two percent uptick from the May forecast.

One notable factor contributing to this positive outlook is the projected harvested acreage of tomatoes grown under contract, which stands at 254,000 acres. This figure reflects a significant 13 percent jump from the previous year, driven in part by

unseasonably wet weather during the winter and spring. These conditions initially delayed planting by several weeks, but with favorable factors such as record-high tomato prices and ample water availability, contracted acreage experienced substantial growth.

Harvest activities got off to a slower start than usual, commencing in mid-July, approximately two weeks behind the average schedule. However, if dry weather persists, the harvest is expected to continue well into October. As the industry enters its peak harvest period, canneries are diligently managing logistics to ensure the consistent delivery of ripe tomatoes to processing plants. Notably, the Processing Tomato Advisory Board's data reveals a 16 percent decrease in shipments through

August 26, 2023, compared to the same period in the previous year. This decline can be attributed to the late crop start. However, expectations are for shipments to catch up and surpass figures from the past five years.

California's processing tomato sector is experiencing a positive upswing in contracted production and harvested acreage. While weather-related challenges initially hindered the planting season, favorable market conditions and water availability have fueled growth in the industry. As the harvest progresses, stakeholders are optimistic about surpassing shipment numbers from recent years, highlighting the resilience and adaptability of California's tomato producers. 🌱



# Yuba-Sutter Farm Bureau Business Members Directory

Support these businesses and let them know you are a Farm Bureau member!  
Call the Yuba-Sutter Farm Bureau at 673-6550 for information on becoming a Business Member.

## AERIAL APPLICATION

### Anderson's Flying Service

Robbins, (530) 738-4205

### Basin Aviation Brandon VanDyke

basinavationag@gmail.com  
(530) 701-1691

### Moe's Crop Dusting Service, Inc.

Pleasant Grove • (530) 682-5117

### Sutter Butte Dusters, Inc.

P.O. Box 213, Live Oak • (530) 695-2294  
sutterbuttedusters@gmail.com

### Twin Cities Aviation

94 2nd St., Yuba City • (530) 673-4578

## AGRICULTURAL ADVISING

### Agricultural Advisors

3995 E. Butte Rd., Live Oak  
(530) 674-1255

### Denney Ag Consulting, LLC

PO Box 661, Sutter • (530) 312-5604

## APIARIES

### Strachan Apiaries, Inc.

2522 Tierra Buena Rd., Yuba City  
(530) 674-3881

## ASSOCIATIONS

### California Canning Peach Association

335 Teegarden Ave., Yuba City  
(530) 673-8526

### City of Yuba City

1201 Civic Center Blvd., Yuba City  
(530) 822-4762

### Garden Highway Mutual

### Water Corporation

Yuba City (530) • 674-2837

### Prune Bargaining Association

355 Teegarden, YC • (530) 674-5636

## AUCTION SERVICE

### Bid Cal Inc.

Chico (530) • 345-0840

## AUTOMOTIVE & DIESEL

### John L. Sullivan Dodge

950 Harter Parkway, Yuba City  
(855) 474-1650

### Les Schwab Tire Center-Linda

5998 Lindhurst Ave, Linda  
(530) 743-7818

## BANKING/FINANCIAL

### AgWest Farm Credit

1800 Lassen Blvd., Yuba City, CA  
(530) 671-1420

### Citizens Business Bank

700 Plumas Street., Yuba City  
(530) 674-6207

### Core Financial Group

1215 Plumas St, YC • (530) 228-3029  
michael@mycoremoney.com

### Crippen and Associates

319 6th St. Suite #7, Marysville,  
CA 95901 • (530) 742-8201

### Five Star Bank

855 Harter Parkway Suite 350B, Yuba City  
(530) 431-0950

### Plumas Bank

1280 Bridge St., Yuba City, CA 95991  
(530) 755-3700

### Rabo AgriFinance

855 Harter Pkwy, Yuba City  
(855) 887-9276

### River Valley Community Bank

1629 Colusa Ave., Yuba City  
(530) 821-2460

### Tenney & Company, CPA

1528 Starr Drive, Ste A, Yuba City, CA  
95993 • (530) 674-4211

## CHEMICAL & FERTILIZER COMPANIES

### Grow West

2100 Everglade Rd Yuba City  
(530) 671-3571

### Helena Agri Business

Colusa Hwy Yuba City • (530) 674-3718

### Wilbur Ellis

900 North George Washington Blvd,  
Yuba City 9599 • (530) 673-0921

## CONSTRUCTION

**Gary Smith** Yuba City • (530) 701-6731

**Hilbers Inc** 770 N. Walton, Yuba City  
(530) 673-2947

## CUSTOM FARMING

### Fiveway, Inc.

3339 N Township Rd., Yuba City  
(530) 671-9519

### John Behrend Custom Logging

Dobbins CA • (530) 632-3528

## EQUIPMENT/VEHICLES

### Beeler Tractor Co.

887 E. Onstott Rd., Yuba City  
(530) 673-3555

### Holt Ag Solutions

2950 Colusa Hwy Yuba City  
(530) 755-3363

### N&S Tractor

Yuba City • (530) 923-7675

### Orchard Machinery Corporation

2700 Colusa Hwy, Yuba City  
(530) 673-2822

## FARM MANAGEMENT

### JS Johal & Sons, Inc.

5020 Garden Hwy, Yuba City  
(530) 682-3600

### PR Ag Services, Paul Takhar

(530) 682-6900  
treeshakes@gmail.com

## FARMS, RANCHES & INDIVIDUALS

### Bains Inc.

2091 Eager Rd, Live Oak • (530) 300-3594

### BGH LP

6394 Larkin Rd., Live Oak, CA 95953

### Full Belly Farm

16141 Road 43,  
Guinda, CA 95637 • (530) 796-2214

### Just Farms LP

Gridley • (530) 846-3958

### Lundberg Family Farms

Mike Denny • (530) 538-3500

### Nor-Cal Farming Company LLC

1325 Berry Rd. Yuba City  
(530) 674-5861

### Premier Walnut Company

Yuba City, Sarb Kandola  
(530) 870-7906

### Red Maple Ranch;

Yuba City,  
Melanie Munro redmapleranchflowers@  
gmail.com (530) 218-7980

### Samara Ranches

Yuba City  
bobby@newlegendinc.com

(530) 788-3838

### Shaeffer Ranch LLC

Clovis CA

### Tamita Farms

S Butte Rd Sutter • (530) 674-9378

### T&M Meyer Farms

Butte Rd Sutter, CA • (530) 570-9957

### Triple H Ranches

Robbins • (530) 666-1500



## FUEL

### Lakeview Petroleum

1528 Colusa Hwy, YC 95993  
(530) 742-7614

### Valley Pacific Petroleum

Stockton CA rob.goodman@vpps.net  
(209) 948-9412

## HULLING & DRYING

### Fedora Farms

2551 Farmland Rd., Meridian  
(530) 696-2230

## INSURANCE

### Denney Insurance Services

856 Richland Rd., Suite B, Yuba City  
(530) 671-5813

### Far Horizon Insurance

1130 Bridge St., Yuba City  
(530) 674-1340

### Farm West Insurance

475 N Palora Ave., Suite B  
(530) 741-0441

### Galligan & Associates

440 Palora Ave, Yuba City  
(530) 671-4841

### Huntley Bravos Zall Insurance Brokers

520 Olive St., Marysville, CA 95901  
(530) 743-9264

### Oakview Insurance Services, Inc.

1560 Sierra Ave., #202, Yuba City, CA  
megan@yourfavoriteagent.net  
(530) 674-5054

### Roberson & Sons Insurance Services Inc.

Eric Roberson • (530) 365-1009

### Rose Insurance Agency

855 Harter Prkwy # 350A, Yuba City  
gselland@roseinsuranceca.com  
(530) 673-8862

### Sutter Buttes Insurance

1527 Starr Dr #M Yuba City  
Rajash Joshi (530) 216-1067

### Zenith Agribusiness Solutions

Craig Thomson  
cthompson@thezenith.com  
(916) 781-2110

## LEGAL SERVICES

### Hyatt-McIntyre & Associates

950 Tharp Rd., Ste. 701, Yuba City  
(530) 674-9761

### The Law Offices of Robin C. Bevier PC

2479 Sunrise Blvd., Gold River CA  
(916) 858-0904

## NURSERY

### Guillaume Grapevine Nursery

21208 State Highway 113  
Knights Landing • (530) 735-6821

### Sierra Gold Nurseries

5320 Garden Hwy., Yuba City  
(530) 674-1145

## PROCESSING & DRYING

### Catlett Warehouse

2138 Catlett Road, Pleasant Grove  
(530) 674-2380

### District 10 Dryers LLC

9000 Mathews Lane, Marysville  
(530) 742-3116

### Miki Orchard, Inc.

803 Boyer Rd., Marysville  
(530) 743-4402

### Sacramento Packing Inc.

833 Tudor Rd., Yuba City, CA 95991  
530-671-4488

### Shoei Foods

1900 Feather River Blvd., Olivehurst  
(530) 742-7866

### Sunsweet Growers

901 Walton Ave, Yuba City  
(530) 751-5379

### SunWest Foods, Inc. Yuba City

(530) 671-8888

### Taylor Brothers Farms

182 Wilkie Ave., Yuba City  
(530) 671-1505

### Van Dykes Rice Dryer

4036 Pleasant Grove Rd.,  
Pleasant Grove • (916) 655-3171

## PUMP & WELL

### Nor Cal Pump & Well Service

1325 Barry Rd., Yuba City  
(530) 674-5861

## REAL ESTATE

### Coldwell Banker Commercial Valley Brokers

1307 Franklin Road, Yuba City  
(530) 673-6614

### Edwards, Lien & Toso • Randy Edwards

randaledwards19@hotmail.com  
(209) 634-9484

### Farm & Ranch Realty

P.O. Box 564, Woodland  
(530) 908-4689

### Stromer Realty Company

591 Colusa Ave., Yuba City  
(530) 671-2770

## SERVICES - OTHER

### Bridge Coffee Co. LLC

101 Clark Ave YC  
(530) 673-6001

### Country Butcher

Adam & Katie Knapp  
(530) 742-0284

### G3 Enterprises 502 E Whitmore Ave.,

Modesto, 95358 • 209-648-8246

### Joel Giusti • Yuba City

(530) 237-6951

### Pride Employment & Staffing

Paul Basi • (530) 661-3405

### The County Florist 1500 North Beale Rd.,

Marysville • 530-743-7387

## SUPPLY

### Bearing Belt Chain Company

829 5Th St Marysville • (530) 743-9256

### California Industrial Rubber Co., Inc

1690 Sierra Ave., Yuba City  
(530) 485-1487

### Derco Supply

2920 A Colusa Hwy. YC • (530) 673-0481

### Grange CoOp & Nursery Supply

1264 Stabler Ln. Yuba City  
(530) 777-3551

### Hust Brothers Inc.

710 3rd St., Marysville • (530) 743-1561

### Sutter Orchard Supply

573 Bridge St., Yuba City  
(530) 673-8068

## TRUCKING

### Gee Agri Transport Inc.

Yuba City • (530) 674-7443

## UTILITIES

### Calpine

5029 S. Township Rd., Yuba City, CA  
95993 • 530-821-2072

### Chico Electric

36 W Eaton Rd, Chico • (530) 891-1933

### Meridian Farms Water Co.

1138 4th St., Meridian • (530) 696-2456

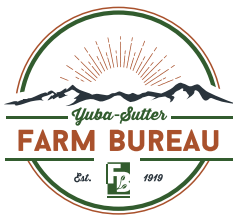
### Renewable Solar

601 W. Grangeville Blvd. Hanford, CA  
93230 • (559) 410-8640

## WINERY

### Cordi Winery

10401 Ingram Ln, Live Oak  
(530) 695-1785



**YUBA-SUTTER  
FARM BUREAU**

475 N. Palora Avenue, Suite A  
Yuba City, CA 95991

Presorted  
Standard  
U.S. Postage  
**PAID**  
Permit #500  
Claremont, CA

DECEMBER 5-7, 2023  
SAFE CREDIT UNION  
CONVENTION CENTER  
DOWNTOWN  
SACRAMENTO



2023

THE ALMOND CONFERENCE

# Connecting the Dots

GROWERS // HANDLERS //  
CUSTOMERS // CONSUMERS

The Almond Conference brings together growers and other industry stakeholders to serve as the premier gathering for networking, education and research in the almond industry. The conference promotes collaboration by fostering a sense of community among all those who are committed to the success of California's almond industry.

Don't miss out — learn more and register at [Almonds.com/Conference](https://Almonds.com/Conference)



VISIT [ALMONDS.COM/CONFERENCE](https://ALMONDS.COM/CONFERENCE)  
TO REGISTER, AND STAY UP-TO-DATE  
ON THE LATEST INFORMATION.